

158 Meadow Way, Caversham, Reading, RG4 5L

£220,000 Leasehold



A well-presented two bedroom second-floor apartment with views overlooking towards Reading town centre.

The accommodation comprises hall, lounge/dining room with Juliette balcony overlooking the meadows, modern fully fitted kitchen with electric cooker, washing machine, two double bedrooms, bathroom with shower, electric heating, secure entry and parking available.

Meadow Way is conveniently situated within easy walking distance of Caversham, Reading, and the mainline train station. The local area is well-served by a variety of shops, schools, bus services, and other local amenities. Viewing this property is highly recommended.

\* Lease term 150 years from 2005; 120 years remaining.\* Ground rent £172.90\* Service charge £1949.84

\*\*Photos taken prior to current Tenancy\*\*

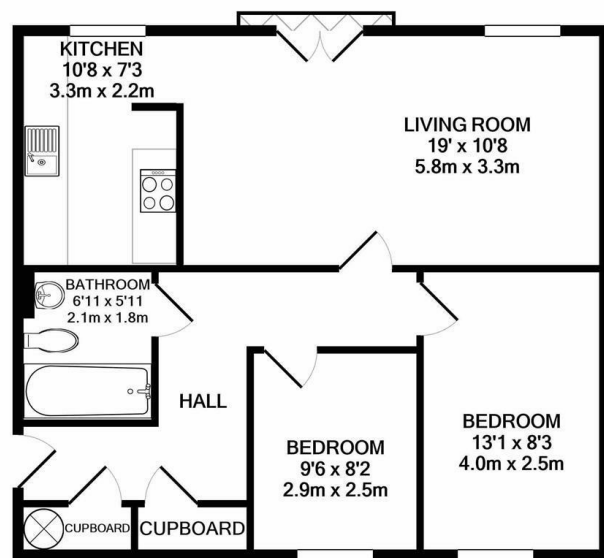
<https://moverly.com/sale/Wti5bYSxRV8eq5r97YgFw5/view>



walmsley.co.uk



# Floor Plan



TOTAL APPROX. FLOOR AREA 615 SQ.FT. (57.1 SQ.M.)

Whilst every attempt has been made to ensure the accuracy of the floor plan contained here, measurements of doors, windows, rooms and any other items are approximate and no responsibility is taken for any error, omission, or mis-statement. This plan is for illustrative purposes only and should be used as such by any prospective purchaser. The services, systems and appliances shown have not been tested and no guarantee as to their operability or efficiency can be given

Made with Metropix ©2020

These particulars, whilst believed to be accurate are set out as a general outline only for guidance and do not constitute any part of an offer or contract. Intending purchasers should not rely on them as statements of representation of fact, but must satisfy themselves by inspection or otherwise as to their accuracy. No person in this firms employment has the authority to make or give any representation or warranty in respect of the property.